

# Technical Data Sheet



## Mara® Jet DI-FSX

Mara® Jet DI-FSX is a eco-solvent inkjet ink, especially developed for Roland printers which can be operated in the Eco Sol Max 2 and 3 ink configuration.



### Key features

- Free from GBL (1,4-BUTANEDIOL (1,4 BD / BDO)
- Color shades and ink-formulation is compatible to Roland Eco Sol Max 2/3
- No use of any substance of concern (no CMR Raw materials)
- High quality pigmentation
- Available in Cartridges:
  - 440ml cartridges incl. chip ESM2
  - 500ml cartridges incl. chip ESM3
  - 1L Bottles
  - 1L Pouches
- Best machine compatibility and maintenance friendliness.
- Fully compatible to Marabu its predecessor Marabu DI-SX

### Field of application

#### Substrates

Mara® Jet DI-FSX substrate range includes:

- Self-adhesive foils (monomeric, polymeric, and cast PVC-films)
- Banner and mesh material
- Flexfoils for textiletransfer
- Suitable papers
- Roll-up banner

### Field of use

Mara® Jet DI-FSX is suitable for the following Printers operating with Eco Sol Max:

Roland

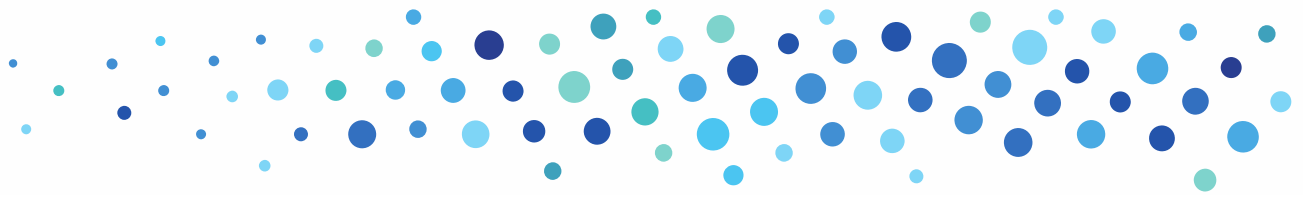
- SJ Pro 4 XR 640
- SJ Pro XF 640
- RF 640
- BN 20
- VSi 300, 540, 640
- EJ 640

Printheads:

- Epson DX5, DX6, DX7

### Ink properties

Characteristics	DI-FSX
Plug & Print compatibility	+++
Resistance	++
Pigmentation	+++
Printing stability	+++



## Drying

The drying parameters don't need to be changed with the use of **Mara® Jet DI-FSX**, but they may be adjusted according to the substrate quality and thickness of the ink layer. For preheating, print heating, and drying, we recommend a temperature range of 35 - 45°C.

## Fade resistance

Pigments of high fade resistance have been used for **Mara® Jet DI-FSX** standard shades in order to ensure long-term outdoor suitability. On foils of appropriate quality, a light fastness of up to 3 years is guaranteed with reference to the central-European climate (DIN EN 4892-2). For fleet marking applications, such as advertisements on vehicles, an additional lamination or varnishing is to be carried out for mechanical protection. For the silver we only recommend lamination because liquid varnishes will destroy the silver effect

## Colour Range

### Available Colours

- 428 Yellow
- 434 Light Magenta
- 438 Magenta
- 455 Light Cyan
- 459 Cyan
- 485 Light Black
- 489 Black

## Auxiliaries

### DI-UR5 Cleaner

For cleaning print heads and printer parts DI-UR 5 can be used for all components of the ink system (after longer machine stops). This cleaner has been chemically adjusted to the ink.

We recommend carrying out cleaning cycles at the beginning and the end of production, and cleaning the nozzle plate once a week.

## Shelf Life

**The shelf life for an unopened ink container if stored in a dark room at a temperature of 15 - 25°C is:**

- 1,5 Years for the colours CMYKlclm

The ambient temperature may fall below this value only once for max. 2-3 days. Under different conditions, particularly other storage temperatures, the shelf life will be reduced. In such cases, the warranty given by Marabu expires.

## Change-Over

Changing to **Mara® Jet DI-FSX** from OEM is done:

- Switch & Print = full chemical and colour compatibility



Changing from Roland Original Ink to **Mara® Jet DI-FSX** does not require preliminary cleaning of parts of the printer. Simply replace the empty OEM cartridges one after another. Even in an ink set mixed with OEM-color shades the compatibility is given. **The same applies when changing over from its predecessor DI-SX**

In case of changing from a third-party supplier to **Mara® Jet DI-FSX**, it is our advice to run an additional cleaning cycle with the third-party cleaner before repeating this procedure with the Marabu cleaner DI-UR 5. It is recommended to exchange the dampers, and any other parts if necessary.





## Note

Our technical advice whether spoken, written, or through test trials corresponds to our current knowledge to inform about our products and their purpose. This is not meant as an assurance for certain properties of the products nor their suitability for each application.

Therefore, you are obliged to conduct your own tests with our supplied products to confirm their suitability for the desired process or purpose. The foregoing information is based on our experience and should not be used for specification purposes. All characteristics described in this Technical Data Sheet refer exclusively to the standard products listed under "Range", provided that they are processed in accordance with their intended use and only when used with the recommended auxiliaries. The selection and testing of the ink for specific applications is exclusively your responsibility. Should, however, any liability claims arise, they shall be limited to the value of the goods delivered by us and utilised by you with respect to any and all damages not caused intentionally or by gross negligence.

## Labeling

For **Mara® Jet DI-FSX** and its auxiliaries, there are current material safety data sheets available according to EC regulation 1907/2006, informing in detail about all relevant safety data including labelling according to EC regulation 1272/2008 (CLP regulation). Such health and safety data may also be derived from the respective label.

## Safety rules for solvent printing inks

Solvent-inks contain some substances which may irritate the skin. Therefore, we recommend to take utmost care when working with solvent printing inks. Parts of the skin soiled with ink are to be cleaned immediately with water and soap. Please, read the notes on labels and on safety data sheets.

## Marabu – Colors made for life

- Certification to international standards ISO 9001, 14001 & OHSAS 18001
- Leading-edge research and development enables us to design innovative products to meet the very latest real-world challenges of our customers
- Corporate responsibility – particularly environmental protection – is at the heart of our business. We have underlined this commitment by creating a dedicated department for product and environmental safety
- We systematically reduce hazardous substances in our products, making our standards among the highest in the industry
- Our international service and support network of subsidiaries and partners offers assistance and advice wherever you are



### Marabu GmbH & Co. KG

Asperger Strasse 4  
71732 Tamm/Germany  
Phone +49 7141 6910  
info@marabu-inks.com  
www.marabu-inks.com